

# InnovateIT Reverse Osmosis

## MAIN ENCLOSURE (LVPC-01)

### MAIN ENCLOSURE (LVPC-01)

| SHEET     | REV | DESCRIPTION                          |
|-----------|-----|--------------------------------------|
| <u>01</u> | 0   | COVER SHEET & DRAWING LIST           |
| <u>02</u> | 0   | ENCLOSURE BILL OF MATERIALS          |
| <u>03</u> | 0   | ENCLOSURE BILL OF MATERIALS          |
| <u>04</u> | 0   | ENCLOSURE BACK PLANE DETAILS         |
| <u>05</u> | 0   | 460VAC POWER DISTRIBUTION            |
| <u>06</u> | 0   | 460VAC - VARIABLE FREQUENCY DRIVE 01 |
| <u>07</u> | 0   | 24VDC - POWER DISTRIBUTION DETAILS   |
| <u>08</u> | 0   | 24VDC CONTROL DETAILS                |
| <u>09</u> | 0   | 24VDC - PLC LOCAL I/O DETAILS        |
| <u>10</u> | 0   | PLC MOD 01 - I/O POWER DISTRIBUTION  |
| <u>11</u> | 0   | PLC MODULE 03 & 04 - ANALOG INPUTS   |
| <u>12</u> | 0   | PLC MODULE 05 - ANALOG OUTPUTS       |

UNLESS OTHERWISE NOTED:  
 1) ALL DIMENSIONS ARE IN INCHES  
 2) UNLESS ALL DIMENSIONS  
 3) TOLERANCES (NON-ACCUMULATING)

FOR DIMENSIONS UNLESS OTHERWISE SPECIFIED:  
 DECIMAL: 1 P.L. ±.01"  
 DECIMAL: 2 P.L. ±.005"  
 DECIMAL: 3 P.L. ±.002"  
 FRACTIONAL: ±.004"  
 ANGLES: ±.5°

FOR DIMENSIONS UNLESS OTHERWISE SPECIFIED:  
 DECIMAL: 1 P.L. ±.01"  
 DECIMAL: 2 P.L. ±.005"  
 DECIMAL: 3 P.L. ±.002"  
 FRACTIONAL: ±.004"  
 ANGLES: ±.5°

#### DRAWING REFS.

| REV | DATE      | DESCRIPTION | DRAWN | CHKD | APPV |
|-----|-----------|-------------|-------|------|------|
| 0   | 1/22/2023 |             | tdw   |      |      |
|     |           |             |       |      |      |
|     |           |             |       |      |      |
|     |           |             |       |      |      |

INNOVATEIT  
 16 Kaimos Street  
 Albany, NY 12205  
 (518) 741-4200

DESIGNS RELEASED IN THIS DESIGN DOCUMENT ARE THE PROPERTY OF INNOVATEIT. THE DESIGN SHALL NOT BE REPRODUCED WITHOUT THE EXPRESSED WRITTEN PERMISSION OF INNOVATEIT. THIS DRAWING MUST NOT BE DISCLOSED TO ANY THIRD PARTY WITHOUT THE EXPRESSED WRITTEN PERMISSION OF INNOVATEIT. THIS DRAWING MUST NOT BE COPIED WITHOUT EXPRESS WRITTEN PERMISSION OF INNOVATEIT. CAN WASH EQUIPMENT

DRAWING NAME  
 COVER SHEET & DRAWING LIST

DRAWING NO: #f01o\_no

DWG. SIZE  
 D

SHEET  
 1

REV  
 0

| ITEM | QTY | DESCRIPTION  | MFG                | CATALOG - MFG | CATALOG - ICWE    | Mark  |
|------|-----|--|--------------------|---------------|-------------------|---|
| 1    | 1   | POWER SUPPLY, 180-550 VAC, 24 VDC, 5A                          | MEAN WELL          | WDR-120-24    |                   | <a href="#">PWR1</a>  |
| 2    | 2   | PLC ANALOG INPUT MODULE, 4CH DIFF                              | Omron              | NX-AD3204     | OMRON-NXAD3204    | MOD3, MOD4  |
| 3    | 1   | PLC ANALOG OUTPUT MODULE, 4-20ma, 4 CH                         | Omron              | NX-DA3203     |                   | <a href="#">MOD5</a>  |
| 4    | 1   | PLC POWER EXANSION MODULE, 4A, PUSH TERMINALS                  | Omron              | NX-PF0630     |                   | <a href="#">MOD2</a>  |
| 5    | 1   | PLC, 24 I/O POINTS, NPN DO                                     | Omron              | NX1P2-9024DT  | OMRON-NX1P29024DT | <a href="#">PLC1</a>  |
| 6    | 4   | CIRCUIT BREAKER, THERMAL, TERMINAL BLOCK PLUGIN, 1A            | Phoenix Contact    | 0712194       |                   | CB4, CB5, CB6, CB7  |
| 7    | 4   | DIN RAIL, 35mm x 7.5mm, PERFORATED                             | Phoenix Contact    | 0801733       |                   | ENCL01 BPL01  |
| 8    | 5   | Relay Module, 24VAC/DC Coil, SPDT                              | PHOENIX CONTACT    | 2966184       | 2966184           | CR1, CR2, CR3, CR4, CR5   |
| 9    | 9   | TERMINAL BLOCK, END CLAMP, GRAY                                | Phoenix Contact    | 0800886       |                   | TS1 , TFU1 , TS2 , GND1   |
| 10   | 4   | TERMINAL BLOCK, FUSE HOLDER, 24V LED, 25A                      | Phoenix Contact    | 3212172       |                   | TFU1 1, TFU1 2, TFU1 3, TFU1 4  |
| 11   | 28  | TERMINAL BLOCK, GRAY, 24A, 1 ROW/ 2PT, 26...12 AWG             | Phoenix Contact    | 3209510       |                   | TS2 1000, TS2 1001, TS2 1002, TS2 1007, TS2 1601A, TS2 1607, TS2 1602, TS2 1603, TS2 1604, TS2 1606, TS2 3000, TS2 3001, TS2 3002, TS2 3003, TS2 3004, TS2 3005, TS2 3006, TS2 3007, TS2 3008, TS2 1500, TS2 1003A, TS2 1003C, TS2 1605A, TS2 1605C, TS2 1501, TS2 1601C, TS2 1601B, TS2 1008 |
| 12   | 8   | TERMINAL BLOCK, GRAY, 24A, 1 ROW/ 4PT, 26...12 AWG             | Phoenix Contact    | 3209578       |                   | TS1 5, TS1 6, TS1 7, TS1 8, TS1 3, TS1 10, TS1 4, TS1 9   |
| 13   | 1   | TERMINAL BLOCK, MOTOR, GRAY, 25A, 4 ROW / 2 PT, 26...12 AWG    | Phoenix Contact    | 3210542       |                   | MTS1 1  |
| 14   | 5   | TERMINAL BLOCK, PE, GREEN/YELLOW, 24A, 1 ROW/ 4PT, 26...12 AWG | Phoenix Contact    | 3209594       |                   | TS1 1, GND1 1, GND1 2, GND1 3, TS1 2  |
| 15   | 1   | TERMINAL END COVER, GRAY, 1 ROW/ 2PT                           | Phoenix Contact    | 3030417       |                   | <a href="#">TS2</a>   |
| 16   | 4   | TERMINAL END COVER, GRAY, 1 ROW/ 4 PT                          | Phoenix Contact    | 3030514       |                   | TS1 , GND1  |
| 17   | 1   | ENCLOSURE BACK PANEL, 22" x 22" GALVANIZED                     | Rittal             | WM 8018.601   |                   | ENCL01 BPL01  |
| 18   | 1   | OVERLOAD RELAY, 3P, 1.6..2.5A, CLASS 10                        | Schneider Electric | LRD07         |                   | <a href="#">OL1</a>   |
| 19   | 1   | CIRCUIT BREAKER, 10A, C-CURVE, 2P, BRANCH PROTECTION           | Schneider Electric | M9F42210      |                   | <a href="#">CB3</a>   |
| 20   | 1   | CIRCUIT BREAKER, 10A, C-CURVE, 3P, BRANCH, 10kA (UL489)        | Schneider Electric | M9F42310      |                   | <a href="#">CB1</a>   |
| 21   | 1   | CIRCUIT BREAKER, 8A, C-CURVE, 3P, BRANCH, 10kA (UL489)         | Schneider Electric | M9F42308      |                   | <a href="#">CB2</a>   |
| 22   | 1   | CONTACTOR, 3P, 18A, 24VDC COIL                                 | Schneider Electric | LC1D18BD      |                   | <a href="#">ESR1</a>  |
| 23   | 1   | CONTACTOR, 3P, 9A, 24VDC COIL                                  | Schneider Electric | LC1D09BD      |                   | <a href="#">MS1</a>   |
| 24   | 1   | DISCONNECT SWITCH HANDLE, LOCKABLE, 2 POSITION, RED/YELLOW     | Socomec            | 147E1111      |                   | <a href="#">DS1</a>   |

UNLESS OTHERWISE NOTED:  
 (1) ALL DIMENSIONS ARE IN INCHES  
 (2) MINOR SURF FINISHES  
 (3) TOLERANCES (UNLESS SPECIFIED):

FOR FINISHED DIMENSIONS:  
 DECIMAL: 1 P.L. +/- .01"  
 DECIMAL: 2 P.L. +/- .005"  
 DECIMAL: 3 P.L. +/- .002"  
 FRACTIONAL:  
 ANGLES: +/- .5°

FOR FABRICATION DIMENSIONS:  
 UNFINISHED SURF:  
 FINE TURN: +/- .125"  
 ANGLES: +/- .5°

DRAWING REFS.

| REV | DATE      | DESCRIPTION | DRAWN | CHKD | APPV |
|-----|-----------|-------------|-------|------|------|
| 0   | 1/19/2023 |             | tdw   |      |      |
|     |           |             |       |      |      |
|     |           |             |       |      |      |
|     |           |             |       |      |      |

INNOVATEIT  
 16 Kaimes Street  
 Albany, NY 12205  
 (518) 741-4200

ORDERS RECEIVED IN THIS DRAWING DOCUMENT ARE THE PROPERTY OF INNOVATEIT. THE DESIGN SHALL NOT BE REPRODUCED WITHOUT THE EXPRESS WRITTEN PERMISSION OF INNOVATEIT. THIS DRAWING MUST NOT BE DISCLOSED TO ANY THIRD PARTY WITHOUT THE EXPRESS WRITTEN PERMISSION OF INNOVATEIT. THIS DRAWING MUST NOT BE COPIED WITHOUT EXPRESS WRITTEN PERMISSION OF INNOVATEIT. CAN WASH EQUIPMENT

DRAWING NAME  
 ENCLOSURE BILL OF MATERIALS  
 DRAWING NO: 117261.dwg

DWG. SIZE  
 D  
 SHEET  
 2  
 REV  
 0

1 2 3 4 5 6 7 8 9 10 11 12 13 14

I  
H  
G  
F  
D  
C  
B  
A

I  
H  
G  
F  
D  
C  
B  
A

| ITEM | QTY | DESCRIPTION                                       | MFG     | CATALOG - MFG | CATALOG - ICWE | Mark                  |
|------|-----|---|---------|---------------|----------------|-----------------------|
| 25   | 1   | DISCONNECT SWITCH SHAFT                           | Socomec | 14070532      |                | <a href="#">DS1</a>   |
| 26   | 1   | DISCONNECT SWITCH, 3P, 600 VAC, 30A, 100kA, UL 98 | Socomec | 22013003      |                | <a href="#">DS1</a>   |
| 27   | 1   | ROUTER, VPN ACCESS NETWORK DEVICE                 | TOSIBOX | TBL610U5      | TOSIBOX        | <a href="#">ENSW1</a> |

UNLESS OTHERWISE NOTED:  
 1) ALL DIMENSIONS ARE IN INCHES  
 2) MINIMAL DIMENSIONS  
 3) DIMENSIONS FROM FACE UNLESS NOTED

FOR DIMENSIONAL TOLERANCES:  
 DECIMAL 1 P.L. +/- .01"  
 DECIMAL 2 P.L. +/- .01"  
 DECIMAL 3 P.L. +/- .005"  
 FRACTIONAL +/- 1/32"  
 ANGLES +/- .2°

FOR DIMENSIONAL TOLERANCES:  
 DECIMAL 1 P.L. +/- .01"  
 DECIMAL 2 P.L. +/- .01"  
 DECIMAL 3 P.L. +/- .005"  
 FRACTIONAL +/- 1/32"  
 ANGLES +/- .2°

DRAWING REFS.

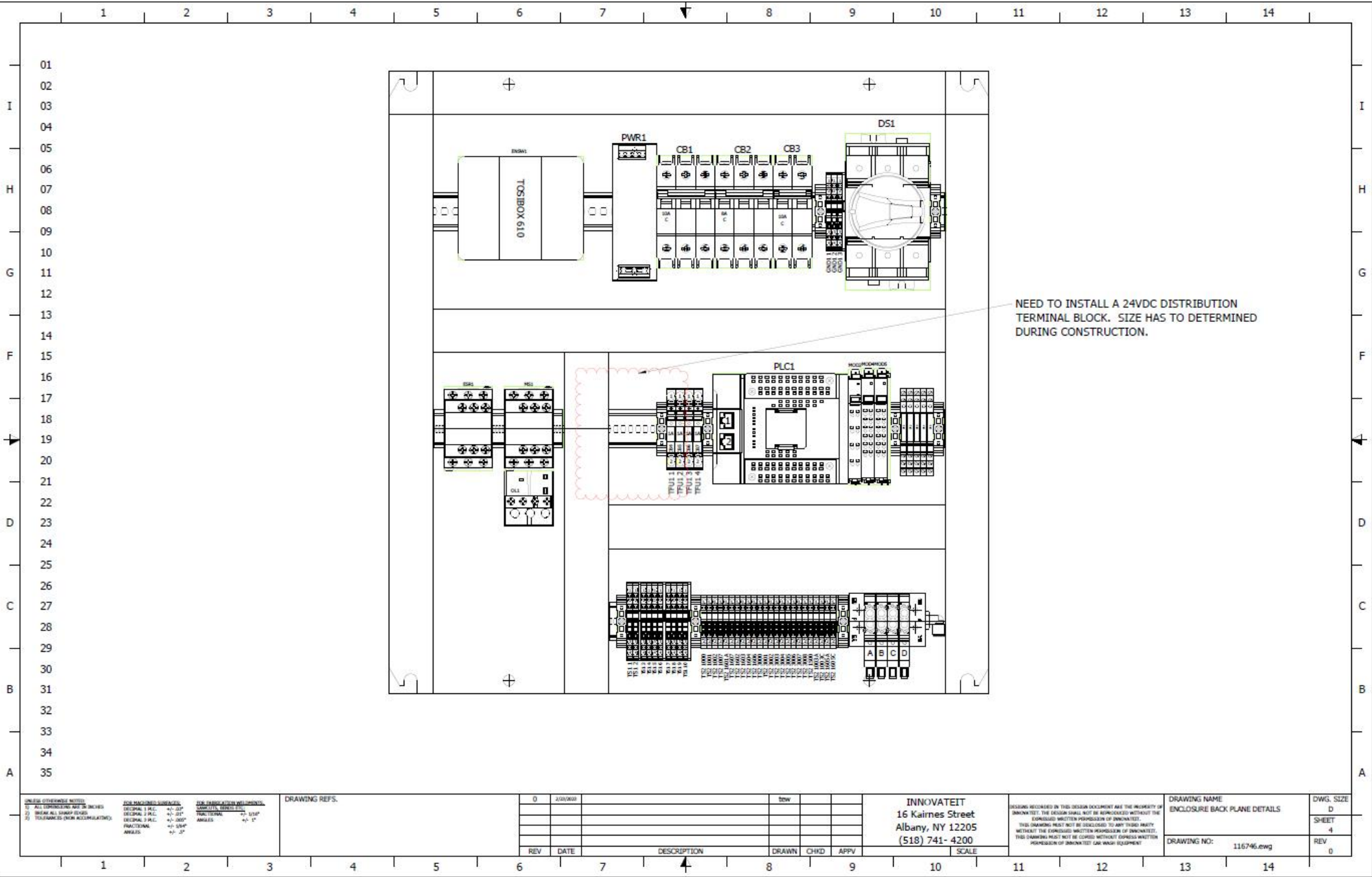
| REV | DATE | DESCRIPTION | DRAWN | CHKD | APPV |
|-----|------|-------------|-------|------|------|
| 0   |      |             |       |      |      |
|     |      |             |       |      |      |
|     |      |             |       |      |      |

INNOVATEIT  
 16 Kairnes Street  
 Albany, NY 12205  
 (518) 741- 4200

DESIGNS RECORDED IN THIS DESIGN DOCUMENT ARE THE PROPERTY OF INNOVATEIT. THE DESIGN SHALL NOT BE REPRODUCED WITHOUT THE EXPRESS WRITTEN PERMISSION OF INNOVATEIT.  
 THIS DRAWING MUST NOT BE REPRODUCED TO ANY THIRD PARTY WITHOUT THE EXPRESS WRITTEN PERMISSION OF INNOVATEIT.  
 THIS DRAWING MUST NOT BE COPIED WITHOUT EXPRESS WRITTEN PERMISSION OF INNOVATEIT FOR ANY EQUIPMENT.

|   |                |
|---|----------------|
| DRAWING NAME<br>ENCLOSURE BILL OF MATERIALS | DWG. SIZE<br>D |
|   | SHEET<br>3     |
| DRAWING NO:<br>118599.zwg                   | REV<br>0       |

1 2 3 4 5 6 7 8 9 10 11 12 13 14



UNLESS OTHERWISE NOTED:  
 1) ALL DIMENSIONS ARE IN INCHES  
 2) BREAK ALL SHARP EDGES  
 3) TOLERANCES UNLESS OTHERWISE SPECIFIED

**FOR MACHINING SURFACES:**  
 DECIMAL ± .010"  
 DECIMAL ± .015"  
 DECIMAL ± .005"  
 FRACTIONAL ± .005"  
 ANGLES ± .5°

**FOR MECHANICAL FITS:**  
 FRACTIONAL ± .010"  
 ANGLES ± .5°

DRAWING REFS.

| REV | DATE | DESCRIPTION | DRAWN | CHKD | APPV |
|-----|------|-------------|-------|------|------|
| 0   |      |             |       |      |      |

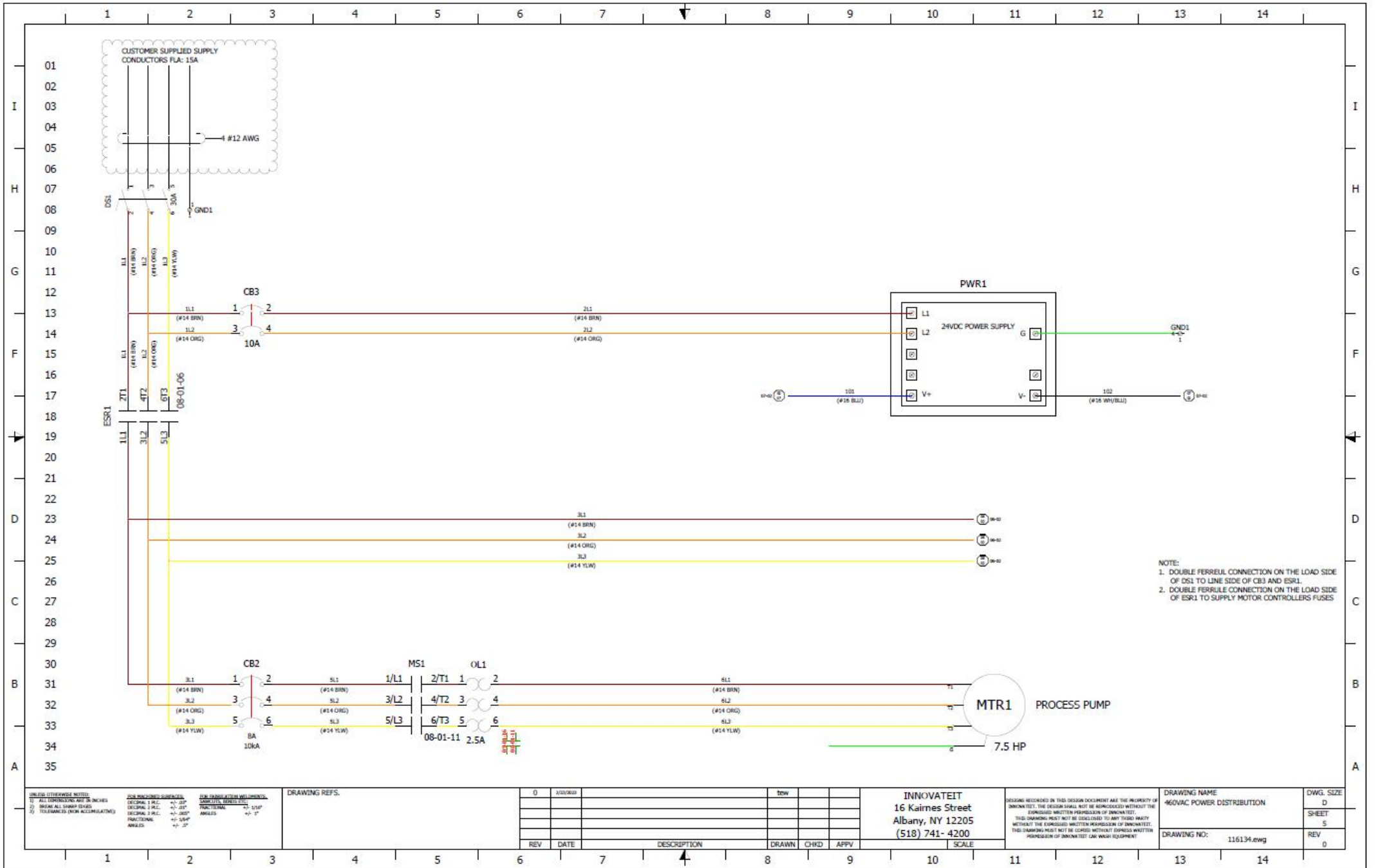
**INNOVATEIT**  
 16 Kairnes Street  
 Albany, NY 12205  
 (518) 741-4200

DESIGNS RECORDED IN THIS DESIGN DOCUMENT ARE THE PROPERTY OF INNOVATEIT. THE DESIGN SHALL NOT BE REPRODUCED WITHOUT THE EXPRESS WRITTEN PERMISSION OF INNOVATEIT.  
 THIS DRAWING MUST NOT BE DISCLOSED TO ANY THIRD PARTY WITHOUT THE EXPRESS WRITTEN PERMISSION OF INNOVATEIT.  
 THIS DRAWING MUST NOT BE COPIED WITHOUT EXPRESS WRITTEN PERMISSION OF INNOVATEIT FOR ANY EQUIPMENT.

DRAWING NAME  
 ENCLOSURE BACK PLANE DETAILS  
 DRAWING NO: 116746.ewg

DWG. SIZE  
 D  
 SHEET  
 4  
 REV  
 0





NOTE:  
 1. DOUBLE FERRULE CONNECTION ON THE LOAD SIDE OF DS1 TO LINE SIDE OF CB3 AND ESR1.  
 2. DOUBLE FERRULE CONNECTION ON THE LOAD SIDE OF ESR1 TO SUPPLY MOTOR CONTROLLERS FUSES

UNLESS OTHERWISE NOTED:  
 1) ALL CONNECTIONS ARE 1/8" INCHES  
 2) BREAK ALL SHARP EDGES  
 3) TOLERANCES UNLESS SPECIFIED

FOR MANUFACTURING:  
 DECIMAL: 1/16" ±.015"  
 DECIMAL: 1/32" ±.010"  
 DECIMAL: 1/64" ±.005"  
 FRACTIONAL: ±.005"  
 ANGLES: ±.5°

FOR FABRICATION AND DIMENSIONS:  
 ANGLES: ±.5°  
 HOLE POSITION: ±.015"  
 HOLE SIZE: ±.010"  
 HOLE DIA: ±.005"  
 HOLE LENGTH: ±.010"

DRAWING REFS.

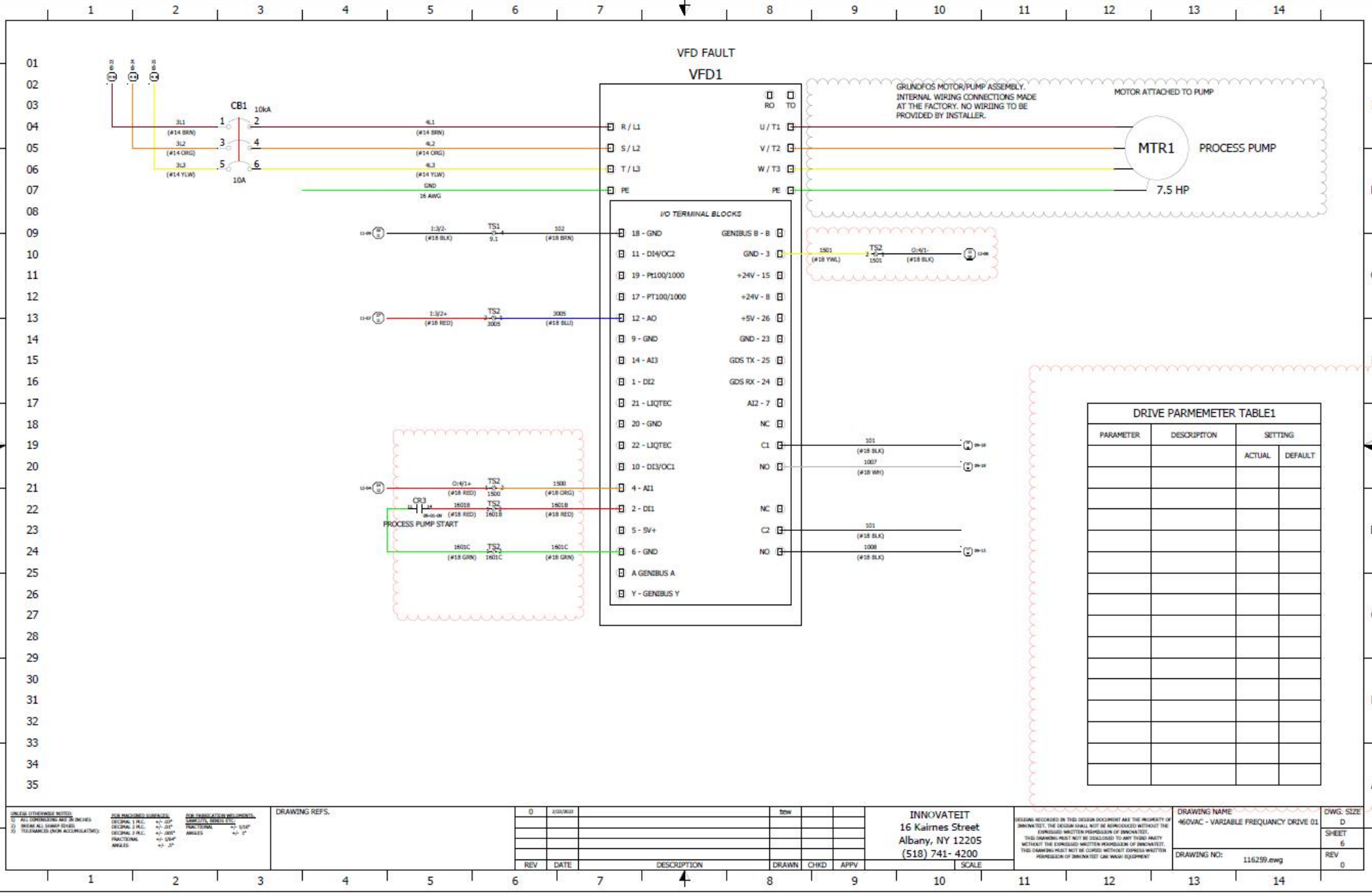
| REV | DATE     | DESCRIPTION | DRAWN | CHKD | APPV |
|-----|----------|-------------|-------|------|------|
| 0   | 08/08/11 |             |       |      |      |
|     |          |             |       |      |      |
|     |          |             |       |      |      |

INNOVATEIT  
 16 Kaimes Street  
 Albany, NY 12205  
 (518) 741-4200

DESIGNS RECORDED IN THIS DESIGN DOCUMENT ARE THE PROPERTY OF INNOVATEIT. THE DESIGN SHALL NOT BE REPRODUCED WITHOUT THE EXPRESS WRITTEN PERMISSION OF INNOVATEIT. THIS DRAWING MUST NOT BE USED FOR ANY THIRD PARTY WITHOUT THE EXPRESS WRITTEN PERMISSION OF INNOVATEIT. THIS DRAWING MUST NOT BE USED WITHOUT EXPRESS WRITTEN PERMISSION OF INNOVATEIT FOR ANY OTHER EQUIPMENT.

DRAWING NAME  
 460VAC POWER DISTRIBUTION  
 DRAWING NO: 116134.ewg

DWG. SIZE  
 D  
 SHEET  
 5  
 REV  
 0



**UNLESS OTHERWISE NOTED:**

1) ALL DIMENSIONS ARE IN INCHES

2) BREAK ALL DIMENSION LINES

3) TOLERANCES (UNLESS SPECIFIED):

FRACATIONAL: ±.004"

ANGLES: ±.1°

DECIMAL: ±.004"

UNLESS OTHERWISE NOTED: DIMENSIONS ARE IN INCHES

FRACATIONAL: ±.004"

ANGLES: ±.1°

DECIMAL: ±.004"

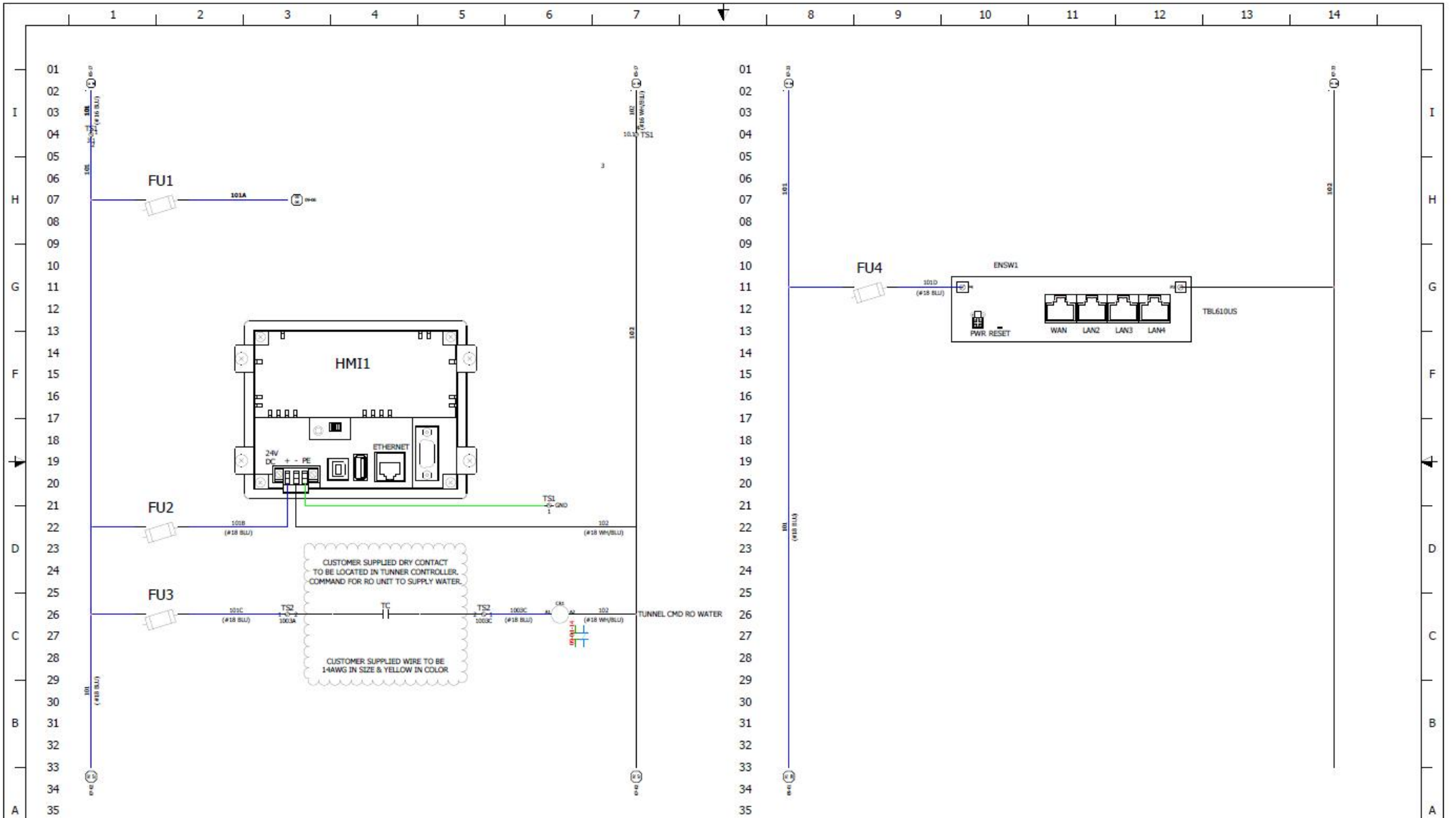
| REV | DATE | DESCRIPTION | DRAWN | CHKD | APPV |
|-----|------|-------------|-------|------|------|
|     |      |             |       |      |      |
|     |      |             |       |      |      |
|     |      |             |       |      |      |

| D | ISSUED |  | new |  |
|---|--------|--|-----|--|
|   |        |  |     |  |
|   |        |  |     |  |
|   |        |  |     |  |

INNOVATEIT  
16 Kaimes Street  
Albany, NY 12205  
(518) 741-4200

DESIGNS RECORDED IN THIS DESIGN DOCUMENT ARE THE PROPERTY OF INNOVATEIT. THE DESIGNER SHALL NOT BE REPRODUCED WITHOUT THE EXPRESSED WRITTEN PERMISSION OF INNOVATEIT.  
THIS DRAWING MUST NOT BE DISCLOSED TO ANY THIRD PARTY WITHOUT THE EXPRESSED WRITTEN PERMISSION OF INNOVATEIT.  
THIS DRAWING MUST NOT BE COPIED WITHOUT EXPRESS WRITTEN PERMISSION OF INNOVATEIT. SEE WASH EQUIPMENT

|              |                                      |           |   |
|--------------|--------------------------------------|-----------|---|
| DRAWING NAME | 460VAC - VARIABLE FREQUENCY DRIVE 01 | DWG. SIZE | D |
|              |                                      | SHEET     | 6 |
| DRAWING NO:  | 116299.rwg                           | REV       | 0 |



UNLESS OTHERWISE NOTED:  
 1) ALL DIMENSIONS ARE IN INCHES  
 2) BREAK ALL CORNER ROUNDS  
 3) TOLERANCES UNLESS SPECIFIED:

FOR DIMENSIONS UNLESS SPECIFIED:  
 DECIMAL: 1/16" ±.015"  
 DECIMAL: 1/32" ±.010"  
 DECIMAL: 1/64" ±.005"  
 FRACTIONAL: ±.005"  
 ANGLES: ±.5°

FOR FABRICATION AND MOUNTING:  
 HOLE LOCATIONS UNLESS SPECIFIED:  
 FRACTIONAL: ±.125"  
 ANGLES: ±.5°

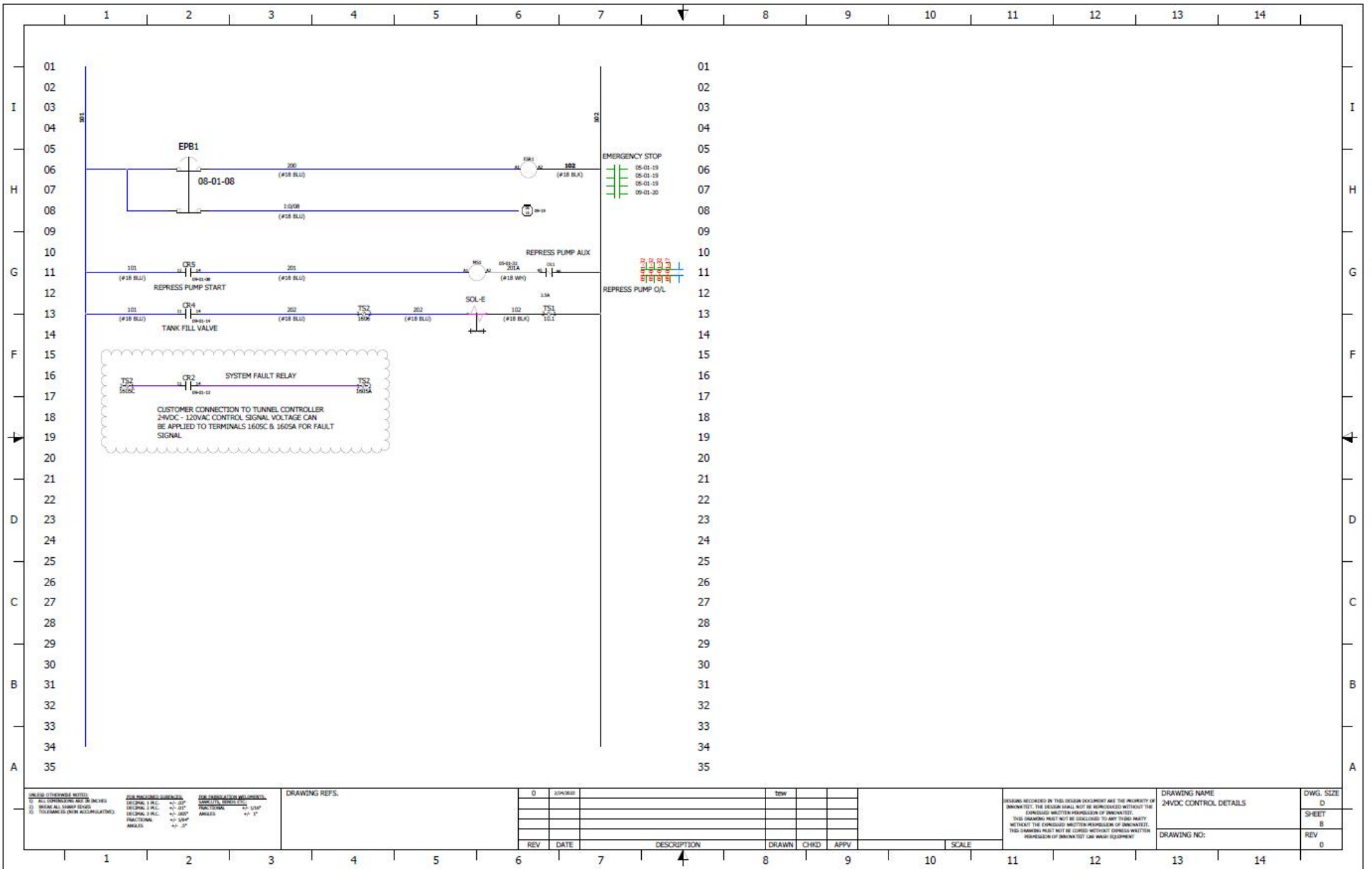
DRAWING REFS.

| REV | DATE      | DESCRIPTION | DRAWN | CHKD | APPV | SCALE |
|-----|-----------|-------------|-------|------|------|-------|
| 0   | 2/20/2010 |             |       |      |      |       |
|     |           |             |       |      |      |       |
|     |           |             |       |      |      |       |
|     |           |             |       |      |      |       |

DESIGNS RECORDED IN THIS DESIGN DOCUMENT ARE THE PROPERTY OF BROWN TEST. THE DESIGNER SHALL NOT BE RESPONSIBLE WITHOUT THE EXPRESS WRITTEN PERMISSION OF BROWN TEST. THIS DRAWING MUST NOT BE DISCLOSED TO ANY THIRD PARTY WITHOUT THE EXPRESS WRITTEN PERMISSION OF BROWN TEST. THIS DRAWING MUST NOT BE COPIED WITHOUT EXPRESS WRITTEN PERMISSION OF BROWN TEST CAR WASH EQUIPMENT.

DRAWING NAME  
 24VDC - POWER DISTRIBUTION DETAILS  
 DRAWING NO:

DWG. SIZE  
 D  
 SHEET  
 7  
 REV  
 0



UNLESS OTHERWISE NOTED:  
 1) ALL DIMENSIONS ARE IN INCHES  
 2) BREAK ALL SHARP EDGES  
 3) TOLERANCES (UNLESS SPECIFIED):

FOR DIMENSIONS SUBSTITUTED:  
 DECIMAL 1 P.L.C. ±.01"  
 DECIMAL 2 P.L.C. ±.01"  
 DECIMAL 3 P.L.C. ±.005"  
 FRACTIONAL ±.004"  
 ANGLES ±.5°

FOR DIMENSIONS NOT SUBSTITUTED:  
 DECIMAL 1 P.L.C. ±.01"  
 DECIMAL 2 P.L.C. ±.01"  
 DECIMAL 3 P.L.C. ±.005"  
 FRACTIONAL ±.004"  
 ANGLES ±.5°

DRAWING REFS.

| REV | DATE      | DESCRIPTION | DRAWN | CHKD | APPV | SCALE |
|-----|-----------|-------------|-------|------|------|-------|
| 0   | 2/26/2023 |             |       |      |      |       |
|     |           |             |       |      |      |       |
|     |           |             |       |      |      |       |
|     |           |             |       |      |      |       |

DESIGNS RECORDED IN THIS DESIGN DOCUMENT ARE THE PROPERTY OF INNOVATTEK. THE DESIGN SHALL NOT BE REPRODUCED WITHOUT THE EXPRESS WRITTEN PERMISSION OF INNOVATTEK. THIS DRAWING MUST NOT BE DISCLOSED TO ANY THIRD PARTY WITHOUT THE EXPRESS WRITTEN PERMISSION OF INNOVATTEK. THIS DRAWING MUST NOT BE COPIED, REPRODUCED, FORWARDED, OR OTHERWISE TRANSMITTED IN ANY MANNER WITHOUT THE EXPRESS WRITTEN PERMISSION OF INNOVATTEK OR WASH EQUIPMENT.

DRAWING NAME  
 24VDC CONTROL DETAILS

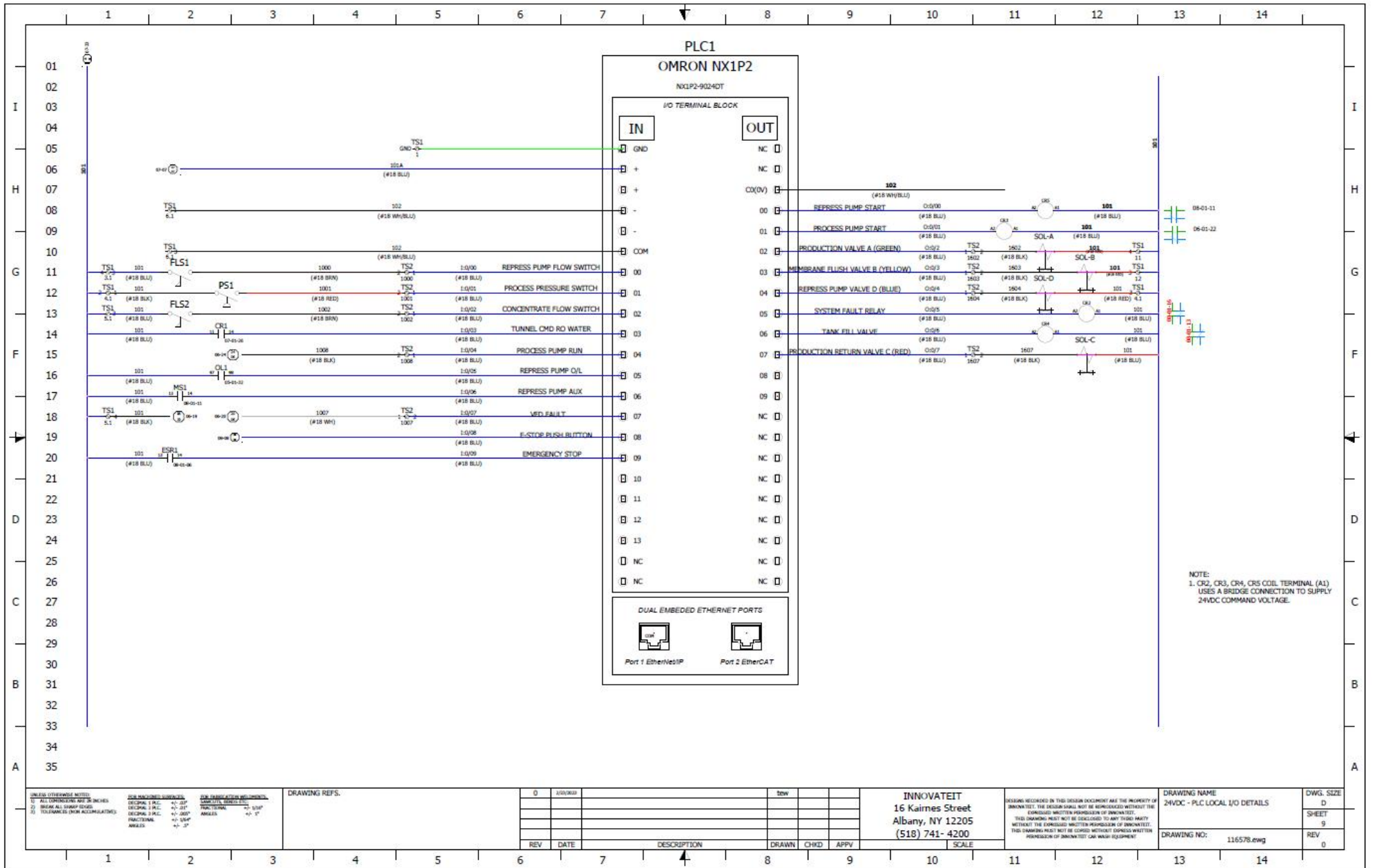
DWG. SIZE  
 D

SHEET  
 B

DRAWING NO:  
 0

REV  
 0





**UNLESS OTHERWISE NOTED:**  
 1) ALL DIMENSIONS ARE IN INCHES  
 2) BREAK ALL CORNER EDGES  
 3) TOLERANCES UNLESS SPECIFIED:

**FOR MANUFACTURING:**  
 DECIMAL: 1 P.L. +/- .01"  
 DECIMAL: 2 P.L. +/- .01"  
 DECIMAL: 3 P.L. +/- .005"  
 FRACTIONS: +/- .005"  
 ANGLES: +/- .2°

**DRAWING REFS.**

| REV | DATE | DESCRIPTION | DRAWN | CHKD | APPV |
|-----|------|-------------|-------|------|------|
|     |      |             |       |      |      |
|     |      |             |       |      |      |
|     |      |             |       |      |      |

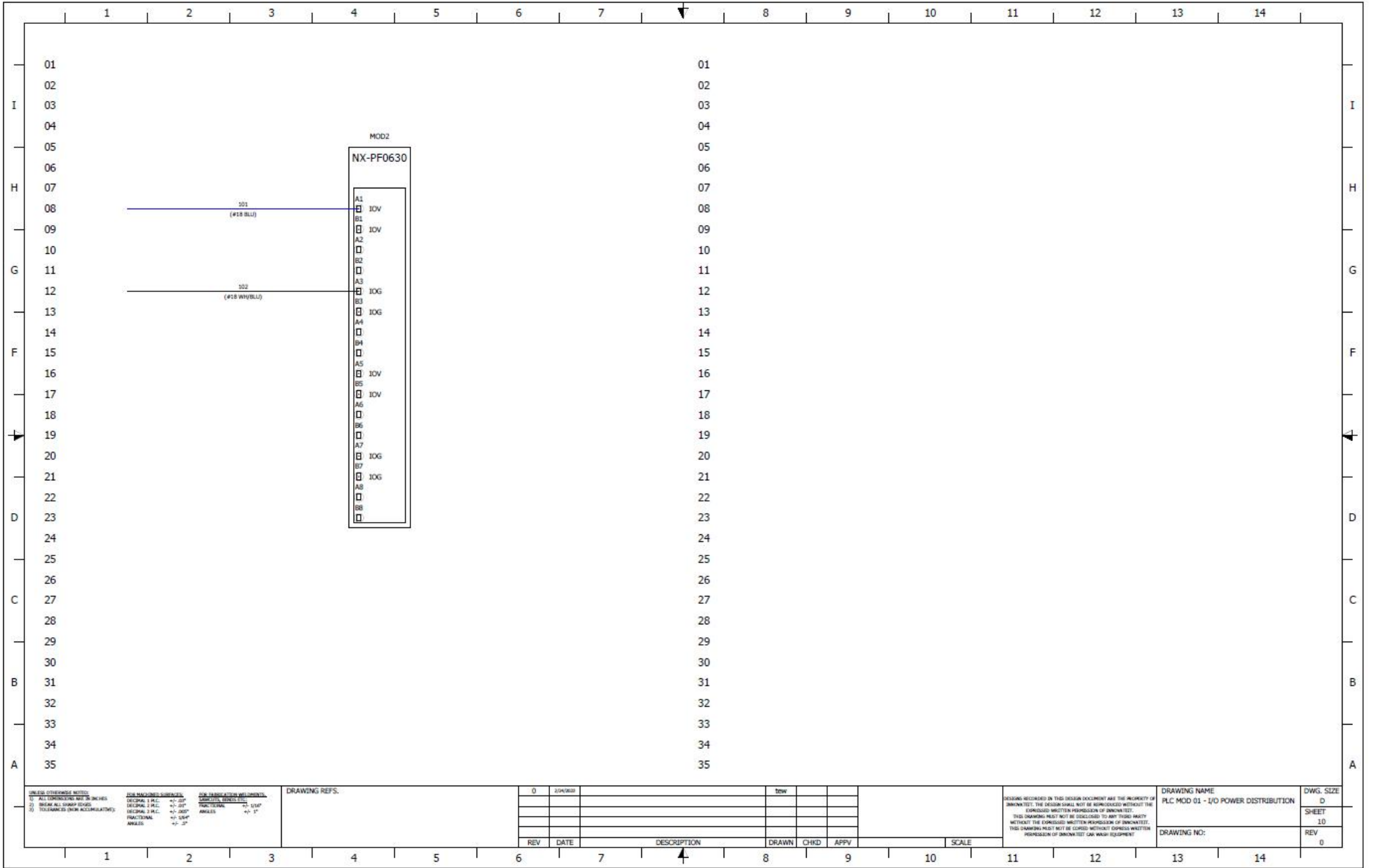
**INNOVATEIT**  
 16 Kaimes Street  
 Albany, NY 12205  
 (518) 741-4200

DESIGNS RECORDED IN THIS DESIGN DOCUMENT ARE THE PROPERTY OF INNOVATEIT. THE DESIGN SHALL NOT BE REPRODUCED WITHOUT THE EXPRESS WRITTEN PERMISSION OF INNOVATEIT. THIS DRAWING MUST NOT BE DISCLOSED TO ANY THIRD PARTY WITHOUT THE EXPRESS WRITTEN PERMISSION OF INNOVATEIT. THIS DRAWING MUST NOT BE COPIED WITHOUT EXPRESS WRITTEN PERMISSION OF INNOVATEIT OR ANY OTHER PARTY.

**DRAWING NAME:**  
24VDC - PLC LOCAL I/O DETAILS

**DRAWING NO.:** 116578.ewg

**DWG. SIZE:**  
D  
SHEET: 9  
REV: 0



UNLESS OTHERWISE NOTED:  
 (1) ALL DIMENSIONS ARE IN INCHES  
 (2) BREAK ALL SHARP EDGES  
 (3) TOLERANCES UNLESS INDICATED:

FOR DIMENSIONS SHOWN AS:  
 DECIMAL: 1 P.L. +/- .01"  
 DECIMAL: 2 P.L. +/- .01"  
 DECIMAL: 3 P.L. +/- .005"  
 FRACTIONAL: +/- .004"  
 ANGLES: +/- .2°

FOR DIMENSIONS NOT SHOWN AS:  
 FRACTIONAL: +/- .015"  
 ANGLES: +/- .5°

DRAWING REFS.

|     |           |             |       |      |      |       |  |  |  |
|-----|-----------|-------------|-------|------|------|-------|--|--|--|
| 0   | 2/24/2011 |             | NEW   |      |      |       |  |  |  |
| REV | DATE      | DESCRIPTION | DRAWN | CHKD | APPV | SCALE |  |  |  |

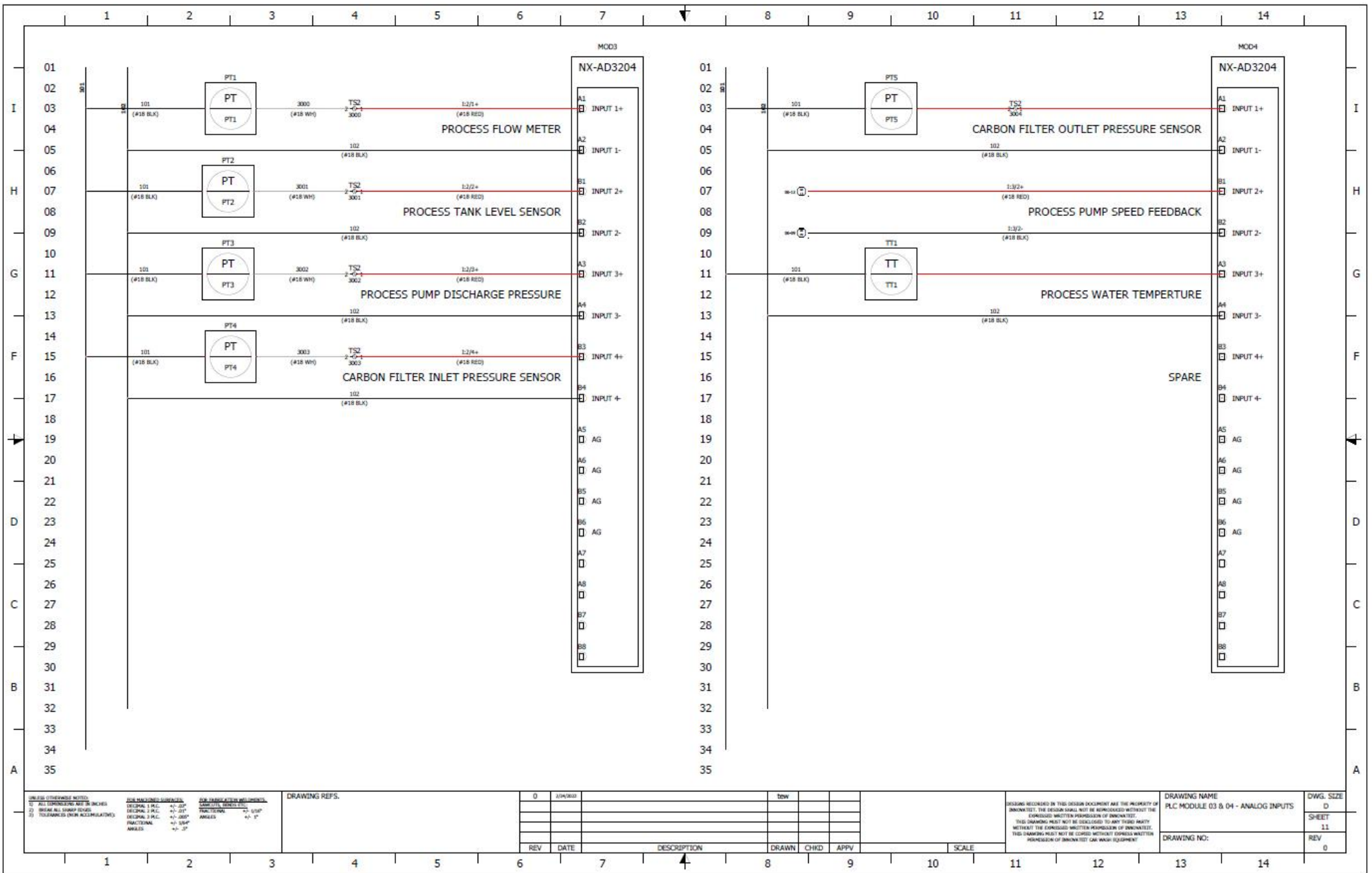
DESIGNS RECORDED IN THIS DESIGN DOCUMENT ARE THE PROPERTY OF INNOVENTEC. THE DESIGN SHALL NOT BE REPRODUCED WITHOUT THE EXPRESS WRITTEN PERMISSION OF INNOVENTEC.  
 THIS DRAWING MUST NOT BE DISCLOSED TO ANY THIRD PARTY WITHOUT THE EXPRESS WRITTEN PERMISSION OF INNOVENTEC.  
 THIS DRAWING MUST NOT BE COPIED WITHOUT EXPRESS WRITTEN PERMISSION OF INNOVENTEC OR ANY EQUIPMENT.

DRAWING NAME  
 PLC MOD 01 - I/O POWER DISTRIBUTION

DWG. SIZE  
 D  
 SHEET  
 10

DRAWING NO:

REV  
 0



UNLESS OTHERWISE NOTED:  
 1) ALL DIMENSIONS ARE IN INCHES  
 2) BREAK ALL SHARP CORNERS  
 3) TOLERANCES UNLESS OTHERWISE SPECIFIED:  
 FRACTIONAL: ±.005"  
 DECIMAL: ±.01"  
 ANGLES: ±.5°

**DRAWING REFS.**

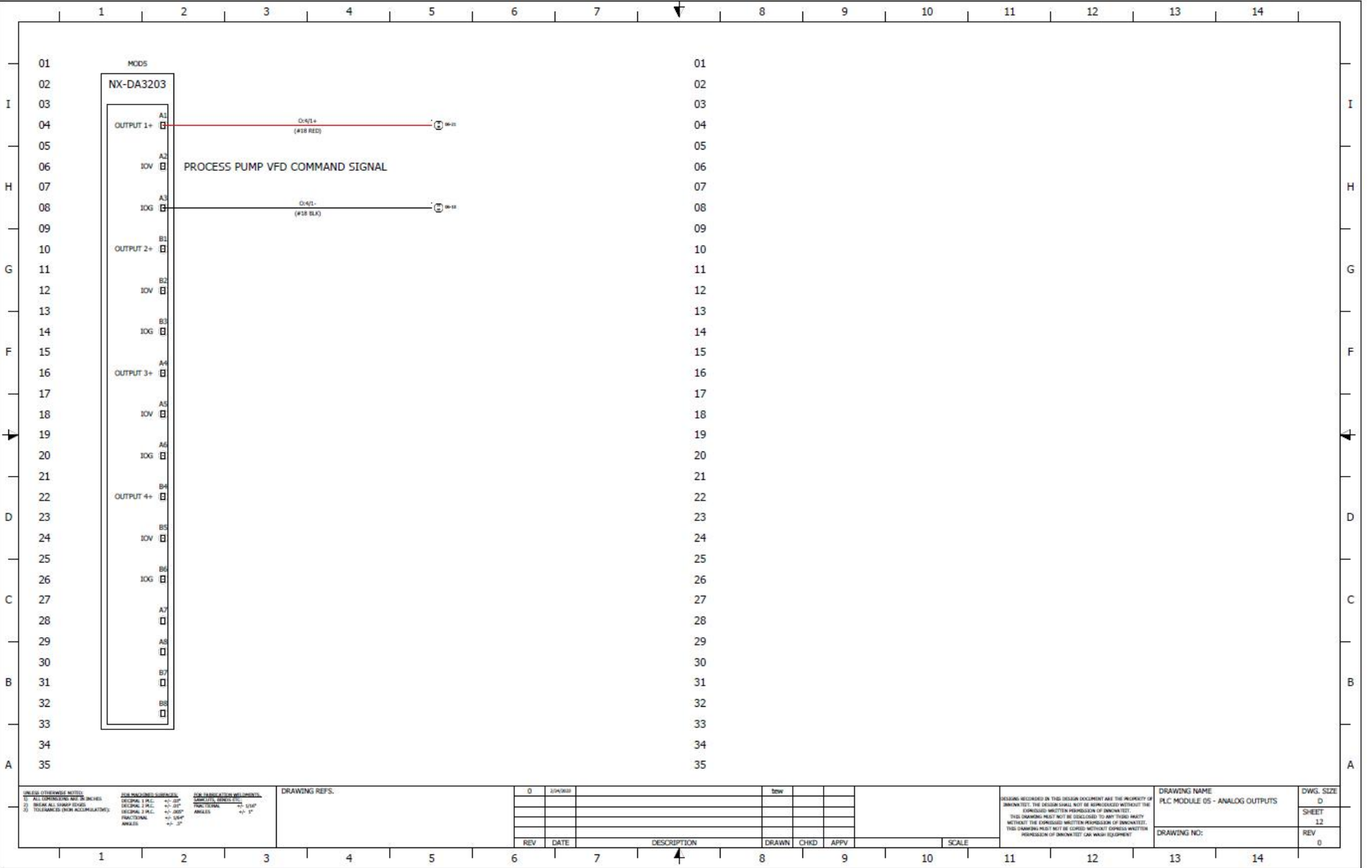
| Q | DATE | DESCRIPTION | DRAWN | CHKD | APPV | SCALE |
|---|------|-------------|-------|------|------|-------|
|   |      |             |       |      |      |       |

|  |  |  |  |  |  |  |
|--|--|--|--|--|--|--|
|  |  |  |  |  |  |  |
|  |  |  |  |  |  |  |
|  |  |  |  |  |  |  |
|  |  |  |  |  |  |  |

DESIGNS RECORDED IN THIS DESIGN DOCUMENT ARE THE PROPERTY OF INNOVATTEK. THE DESIGN SHALL NOT BE REPRODUCED WITHOUT THE EXPRESS WRITTEN PERMISSION OF INNOVATTEK. THIS DRAWING MUST NOT BE DISCLOSED TO ANY THIRD PARTY WITHOUT THE EXPRESS WRITTEN PERMISSION OF INNOVATTEK. THIS DRAWING MUST NOT BE COPIED WITHOUT EXPRESS WRITTEN PERMISSION OF INNOVATTEK CAR WASH EQUIPMENT.

DRAWING NAME: PLC MODULE 03 & 04 - ANALOG INPUTS  
 DRAWING NO:  

DWG. SIZE: D  
 SHEET: 11  
 REV: 0



UNLESS OTHERWISE NOTED:  
 1) ALL DIMENSIONS ARE IN INCHES  
 2) BREAK ALL SHARP EDGES  
 3) TOLERANCES UNLESS INDICATED

FOR DIMENSIONS SUBTRACTED, DIMENSIONS TO CENTER LINE:  
 DECIMAL 1 P.L. +/- .01"  
 DECIMAL 2 P.L. +/- .01"  
 DECIMAL 3 P.L. +/- .005"  
 FRACTIONAL +/- .004"  
 ANGLES +/- .2°

PROCESS PUMP VFD COMMAND SIGNAL

DRAWING REFS.

|     |           |             |       |      |      |
|-----|-----------|-------------|-------|------|------|
| 0   | 2/24/2023 |             | Rev   |      |      |
|     |           |             |       |      |      |
|     |           |             |       |      |      |
| REV | DATE      | DESCRIPTION | DRAWN | CHKD | APPV |

DESIGNS RECORDED IN THIS DESIGN DOCUMENT ARE THE PROPERTY OF INNOVATETEC. THE DESIGN SHALL NOT BE REPRODUCED WITHOUT THE EXPRESS WRITTEN PERMISSION OF INNOVATETEC. THIS DRAWING MUST NOT BE DISCLOSED TO ANY THIRD PARTY WITHOUT THE EXPRESS WRITTEN PERMISSION OF INNOVATETEC. THIS DRAWING MUST NOT BE COPIED WITHOUT EXPRESS WRITTEN PERMISSION OF INNOVATETEC FOR WASH EQUIPMENT.

|  |                |
|--|----------------|
| DRAWING NAME<br>PLC MODULE 05 - ANALOG OUTPUTS | DWG. SIZE<br>D |
|  | SHEET<br>12    |
| DRAWING NO:                                    | REV<br>0       |